

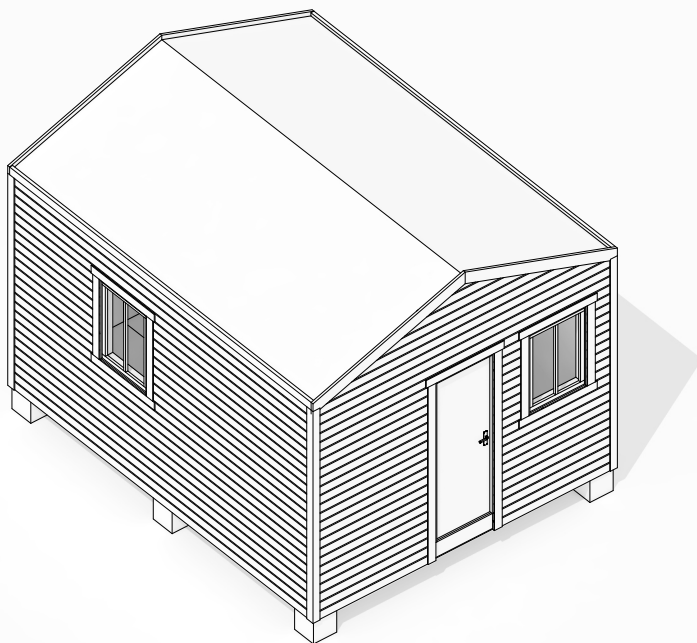
# Panic House

project - Shelter/House

september 2016

NEIMAR | Serbia

Transitional Shelters  
into Permanent  
Dwelling.

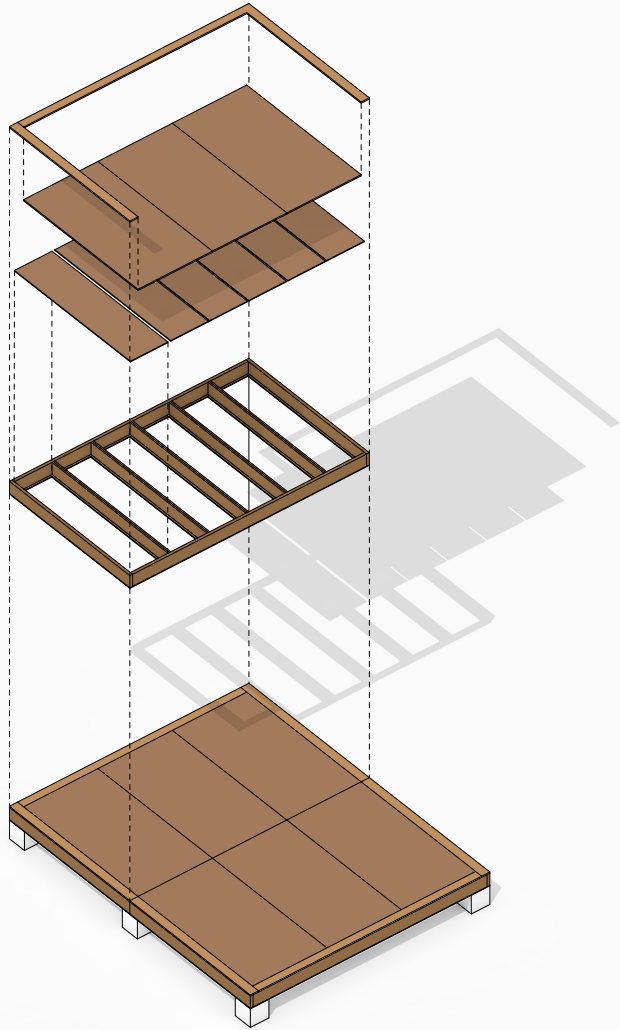


SRBIJA | 37000 KRUŠEVAC | KOSOVSKA 21 | TEL +38137441601 | FAX +38137439308 | PIB: 10032834

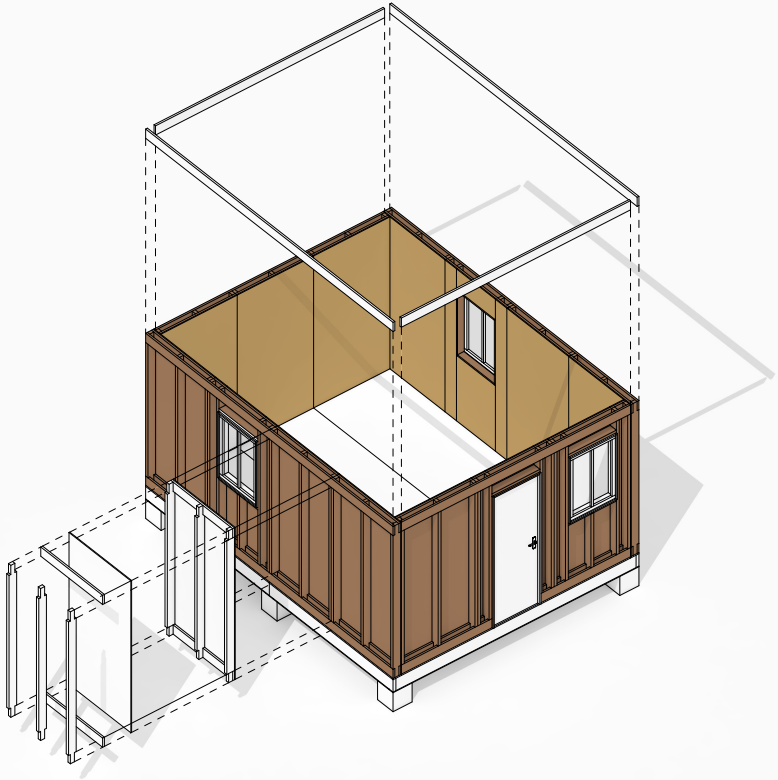


Forcibly displaced people are one of the world's most disadvantaged groups. Whether they are forced to leave their homes due to widespread violence, political repression or natural disasters, meeting needs as basic as housing is a constant struggle for many of these people. This map shows where most of the displaced people come from.



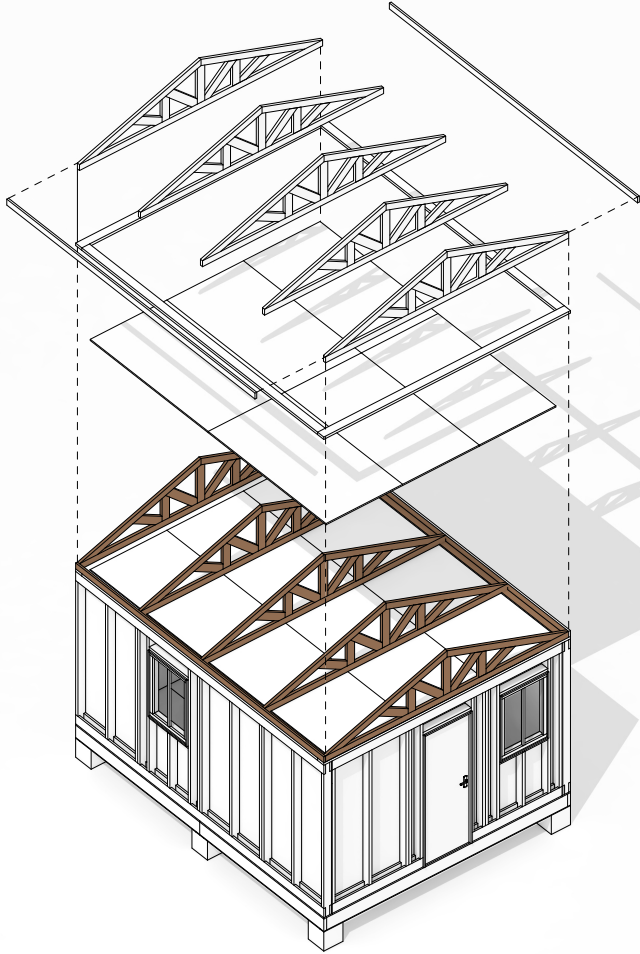


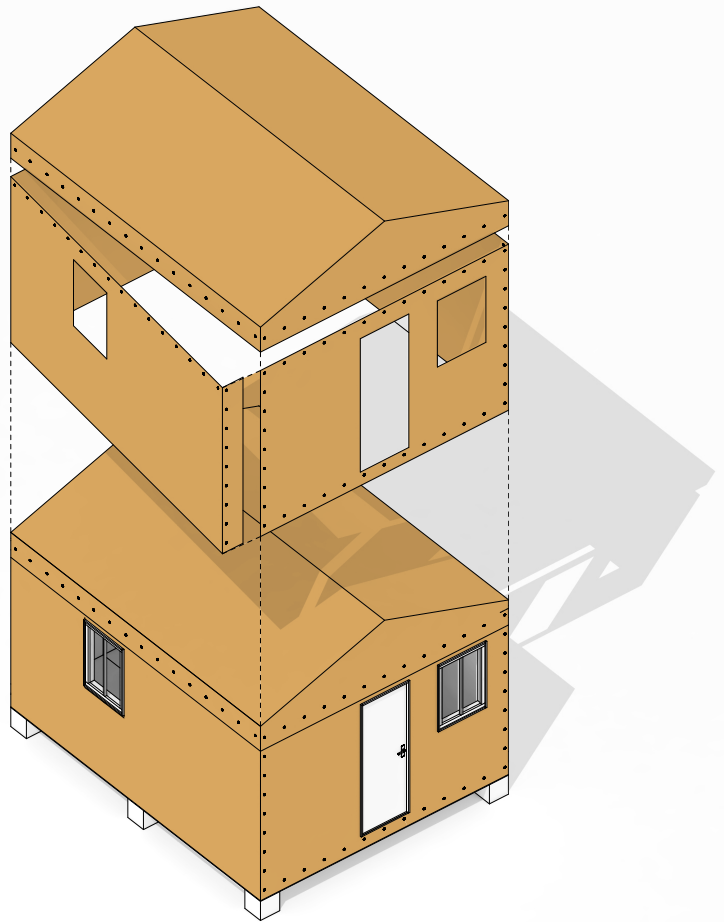
We offer a modular, pre-fabricated housing unit that provides protection from day one. It is fast to assemble by unskilled labor, which is important in difficult conditions when one must act quickly. It's modular construction can be easily disassembled, so moving it to a different location and transition to permanent housing is possible.



---

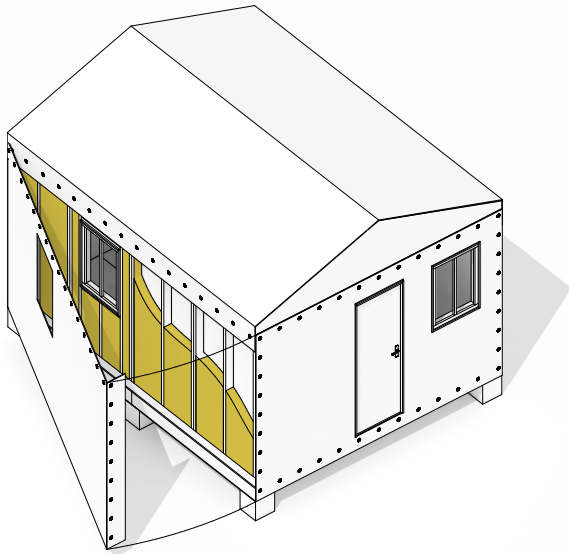
**PHASE ONE** includes building a shelter by 2 people in a short period of time with basic tools. All prefabricated panels are designed to be lightweight so two people can carry it, thus removing the need for heavier mechanization.





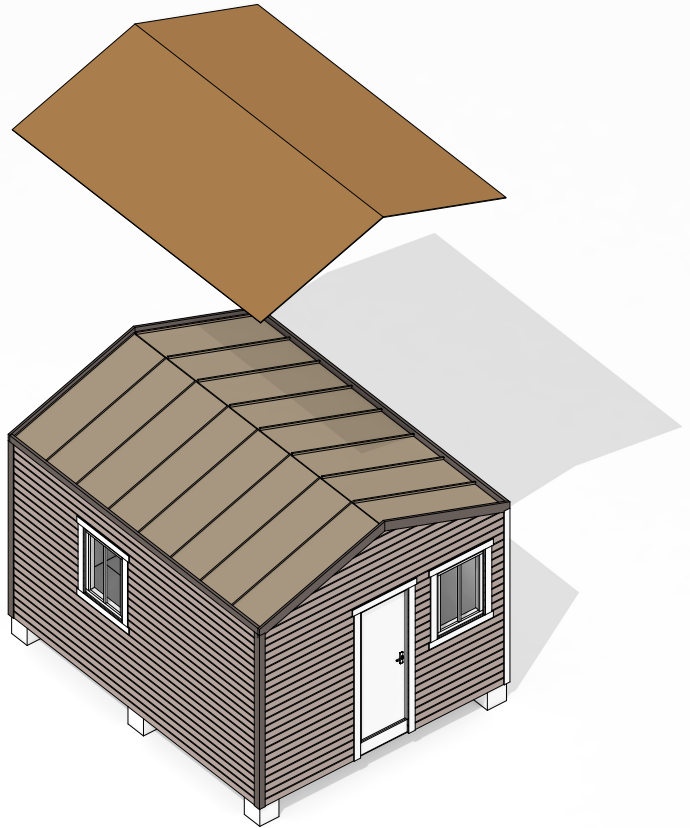
---

Finally a temporary tent (membrane) facade is added to protect the house from wind and rain.



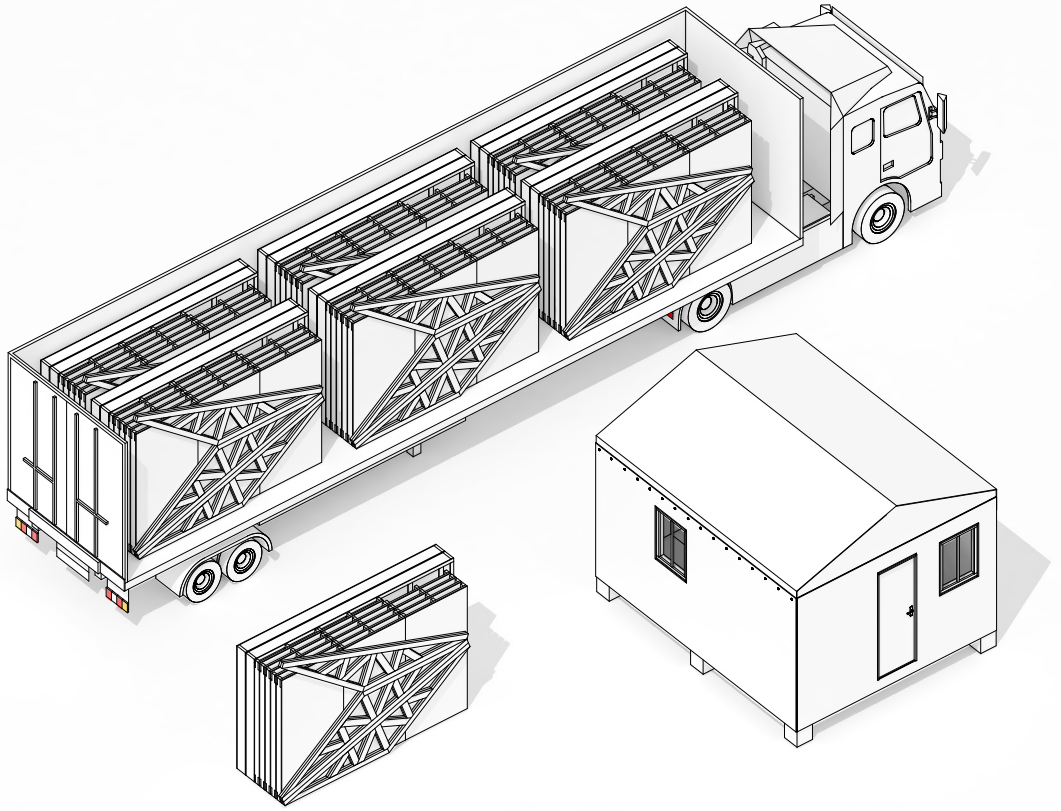
**PHASE TWO** consists of adding the insulation to the walls in order to improve thermal comfort. Tent facade can easily be opened so the user can insulate the unit.



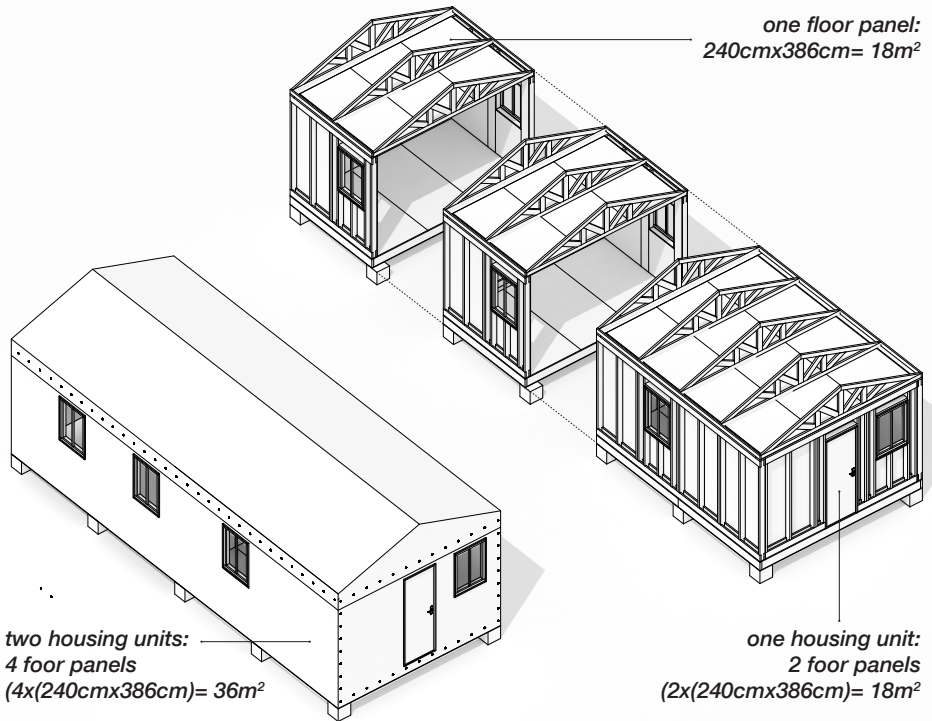


---

**PHASE THREE** consists of using locally made facade cladding and roof to prepare the house for permanent living. Various cladding types can be used and this is up to the user.

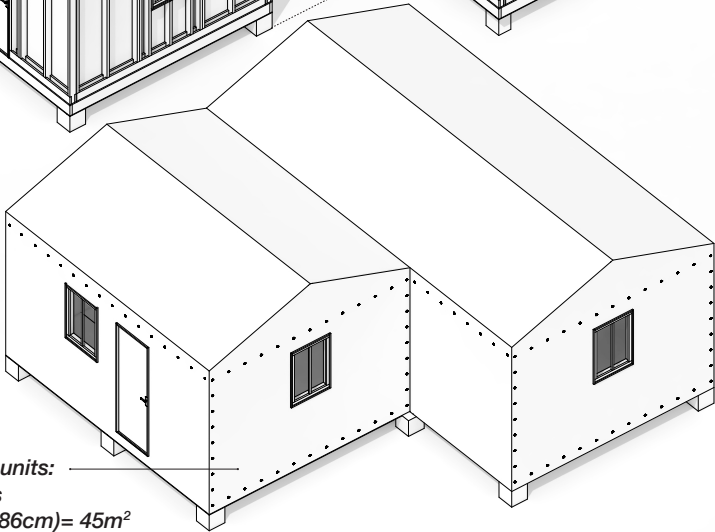
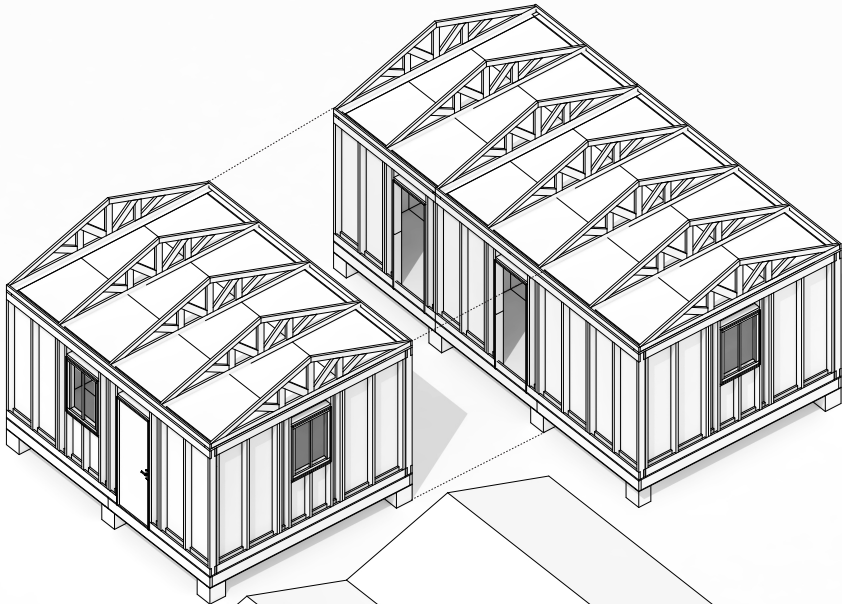


**TRANSPORT.** 6 units are packed in small packages and shipped by a truck. All the elements that make the phase one of the project are light enough so two men can carry it.



---

**SCALABILITY and MODULARITY.** Units can be disassembled and moved to a different location when they are not needed any more. Furthermore, due to the modular construction of the units, couple of different houses can be merged into one larger one in order to house a larger family.



two housing units:  
5 floor panels  
 $(5 \times (240\text{cm} \times 386\text{cm})) = 45\text{m}^2$



Units can be combined in both directions in order to achieve desired spatial qualities.



Photographs of the construction process.



Photogra





**NEIMAR doo** | Kosovska 21, 37000 Kruševac, **Serbia**  
**tel/fax:** +381 37 441601, +381 37 445240, +381 37 439308  
**mob:** +381 66 6131313, +381 63 440871  
**email:** [office@neimar.co.rs](mailto:office@neimar.co.rs)  
**web:** [www.neimar.co.rs](http://www.neimar.co.rs), [www.ekokuca.rs](http://www.ekokuca.rs)